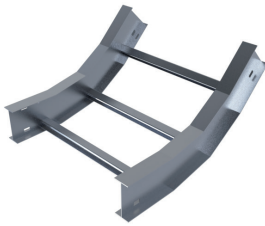
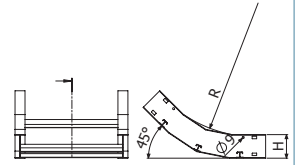




CCI H4

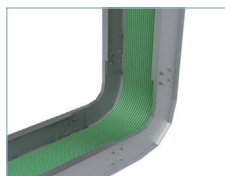


CCI 'A' - 'R' 'B'x'H'



CCI 'A' - 'R' 'B'x'H'

	A (°)	R		B		H		AL	
		inch	mm	inch	mm	inch	mm	REF	Kg/ud
CCI30-12 6x4	30	12	300	6	150	4	100	2/10647	1,48
CCI30-12 9x4	30	12	300	9	230	4	100	2/10648	1,55
CCI30-12 12x4	30	12	300	12	300	4	100	2/10649	1,62
CCI30-12 18x4	30	12	300	18	450	4	100	2/10650	1,75
CCI30-12 24x4	30	12	300	24	600	4	100	2/10651	1,89
CCI30-12 30x4	30	12	300	30	750	4	100	2/10652	2,03
CCI30-12 36x4	30	12	300	36	900	4	100	2/10653	2,16
CCI45-12 6x4	45	12	300	6	150	4	100	2/10654	1,82
CCI45-12 9x4	45	12	300	9	230	4	100	2/10655	1,93
CCI45-12 12x4	45	12	300	12	300	4	100	2/10656	2,03
CCI45-12 18x4	45	12	300	18	450	4	100	2/10657	2,23
CCI45-12 24x4	45	12	300	24	600	4	100	2/10658	2,44
CCI45-12 30x4	45	12	300	30	750	4	100	2/10659	2,65
CCI45-12 36x4	45	12	300	36	900	4	100	2/10660	2,85
CCI-12 6x4	90	12	300	6	150	4	100	2/10661	2,72
CCI-12 9x4	90	12	300	9	230	4	100	2/10662	2,86
CCI-12 12x4	90	12	300	12	300	4	100	2/10663	2,99
CCI-12 18x4	90	12	300	18	450	4	100	2/10664	3,27
CCI-12 24x4	90	12	300	24	600	4	100	2/10665	3,54
CCI-12 30x4	90	12	300	30	750	4	100	2/10666	3,82
CCI-12 36x4	90	12	300	36	900	4	100	2/10667	4,09
CCI30-24 6x4	30	24	600	6	150	4	100	2/10668	1,96
CCI30-24 9x4	30	24	600	9	230	4	100	2/10669	2,06
CCI30-24 12x4	30	24	600	12	300	4	100	2/10670	2,17
CCI30-24 18x4	30	24	600	18	450	4	100	2/10671	2,37
CCI30-24 24x4	30	24	600	24	600	4	100	2/10672	2,58
CCI30-24 30x4	30	24	600	30	750	4	100	2/10673	2,78
CCI30-24 36x4	30	24	600	36	900	4	100	2/10674	2,99
CCI45-24 6x4	45	24	600	6	150	4	100	2/10675	2,51
CCI45-24 9x4	45	24	600	9	230	4	100	2/10676	2,65
CCI45-24 12x4	45	24	600	12	300	4	100	2/10677	2,79
CCI45-24 18x4	45	24	600	18	450	4	100	2/10678	3,06
CCI45-24 24x4	45	24	600	24	600	4	100	2/10679	3,34
CCI45-24 30x4	45	24	600	30	750	4	100	2/10680	3,61
CCI45-24 36x4	45	24	600	36	900	4	100	2/10681	3,88
CCI-24 6x4	90	24	600	6	150	4	100	2/10682	4,10
CCI-24 9x4	90	24	600	9	230	4	100	2/10683	4,30
CCI-24 12x4	90	24	600	12	300	4	100	2/10684	4,51
CCI-24 18x4	90	24	600	18	450	4	100	2/10685	4,92
CCI-24 24x4	90	24	600	24	600	4	100	2/10686	5,33
CCI-24 30x4	90	24	600	30	750	4	100	2/10687	5,74
CCI-24 36x4	90	24	600	36	900	4	100	2/10688	6,15
CCI30-36 6x4	30	36	900	6	150	4	100	2/10689	2,44
CCI30-36 9x4	30	36	900	9	230	4	100	2/10690	2,58
CCI30-36 12x4	30	36	900	12	300	4	100	2/10691	2,72
CCI30-36 18x4	30	36	900	18	450	4	100	2/10692	2,99
CCI30-36 24x4	30	36	900	24	600	4	100	2/10693	3,27
CCI30-36 30x4	30	36	900	30	750	4	100	2/10694	3,54
CCI30-36 36x4	30	36	900	36	900	4	100	2/10695	3,81
CCI45-36 6x4	45	36	900	6	150	4	100	2/10696	3,20
CCI45-36 9x4	45	36	900	9	230	4	100	2/10697	3,37
CCI45-36 12x4	45	36	900	12	300	4	100	2/10698	3,54
CCI45-36 18x4	45	36	900	18	450	4	100	2/10699	3,89
CCI45-36 24x4	45	36	900	24	600	4	100	2/10700	4,23
CCI45-36 30x4	45	36	900	30	750	4	100	2/10701	4,57
CCI45-36 36x4	45	36	900	36	900	4	100	2/10702	4,92
CCI-36 6x4	90	36	900	6	150	4	100	2/10703	5,54
CCI-36 9x4	90	36	900	9	230	4	100	2/10704	5,85
CCI-36 12x4	90	36	900	12	300	4	100	2/10705	6,16
CCI-36 18x4	90	36	900	18	450	4	100	2/10706	6,78
CCI-36 24x4	90	36	900	24	600	4	100	2/10707	7,40
CCI-36 30x4	90	36	900	30	750	4	100	2/10708	8,01
CCI-36 36x4	90	36	900	36	900	4	100	2/10709	8,63



2 x JUI 4 (2/11220)

